

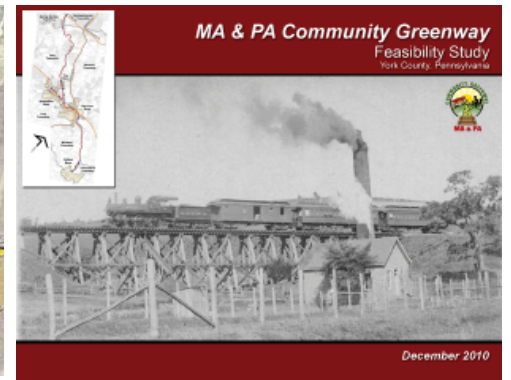
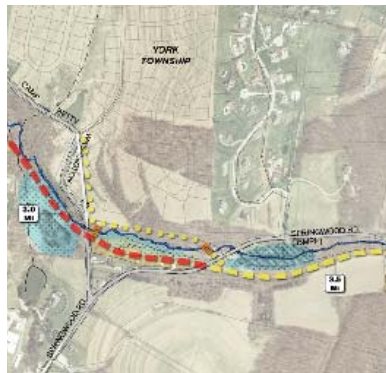
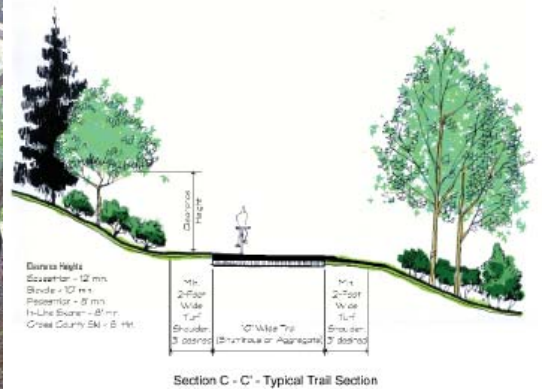
Project Summary:

In the early 1900's, the Maryland and Pennsylvania (MA&PA) Railroad connected York, Pennsylvania and Baltimore, Maryland. Recently, portions of the historic corridor were developed as a recreational trail and garnered interest as the local population began to see the potential for expansion. The YSM Team evaluated the feasibility of developing a 12.5-mile public recreation trail from the City of York to the Borough of Felton. The corridor was evaluated through an assessment of legal, physical and operational opportunities and concerns. The rail corridor passed through seven municipalities including three densely populated boroughs and stretched into very remote, scenic portions of southern York County.

The Feasibility Study identified a pilot section and concepts for its development were presented. An implementation plan and prototypical cost analysis was developed to guide future trail development.

Project Data:

Corridor Length: 12.5 Miles
Completed: Feasibility Study, 2010



Project Team:

YSM, Landscape Architecture
C.S. Davidson, Inc.
Toole Recreation Planning

Client Contact:

Debra Hatley, Director
York Township
Recreation Department
(717) 741-3861